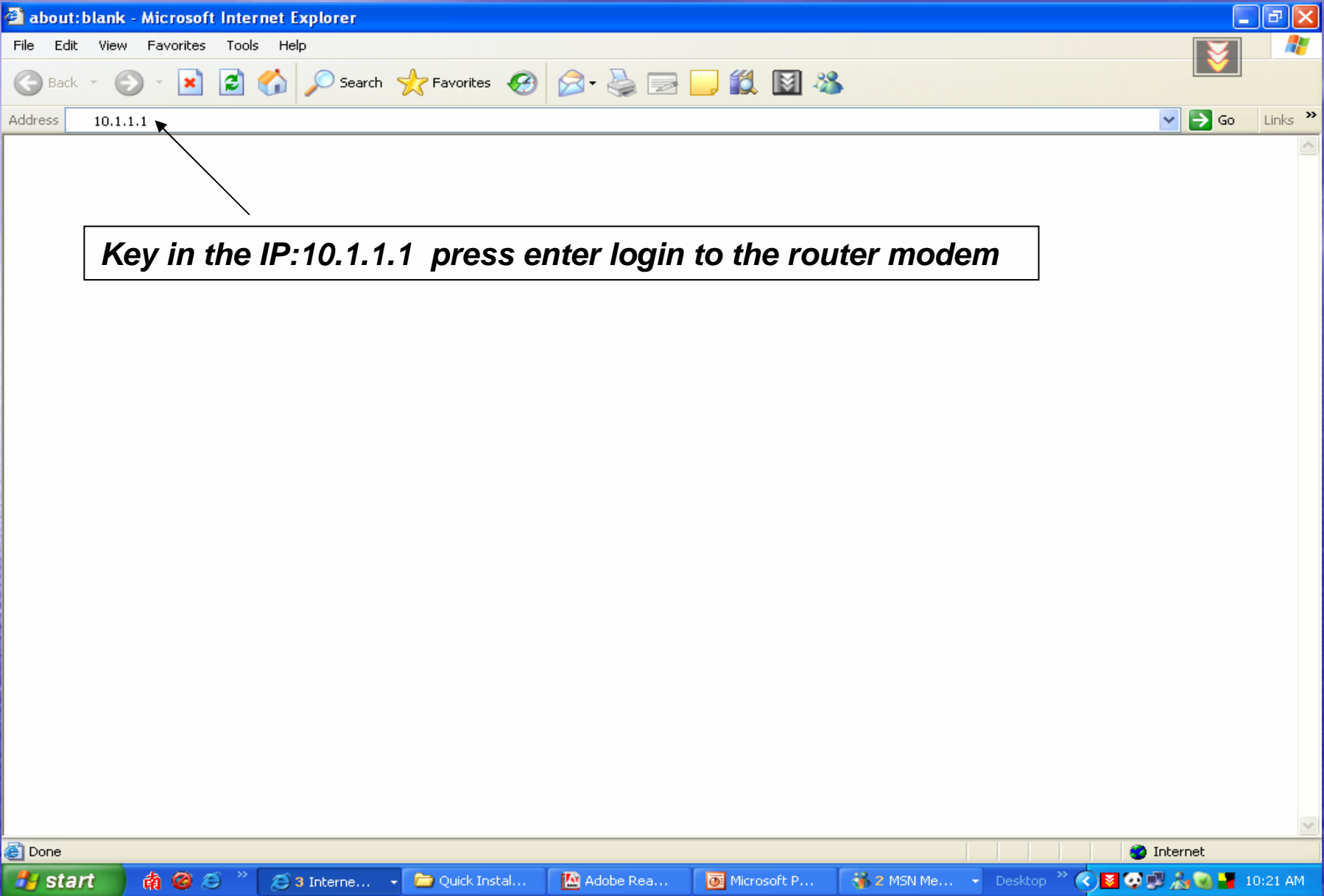


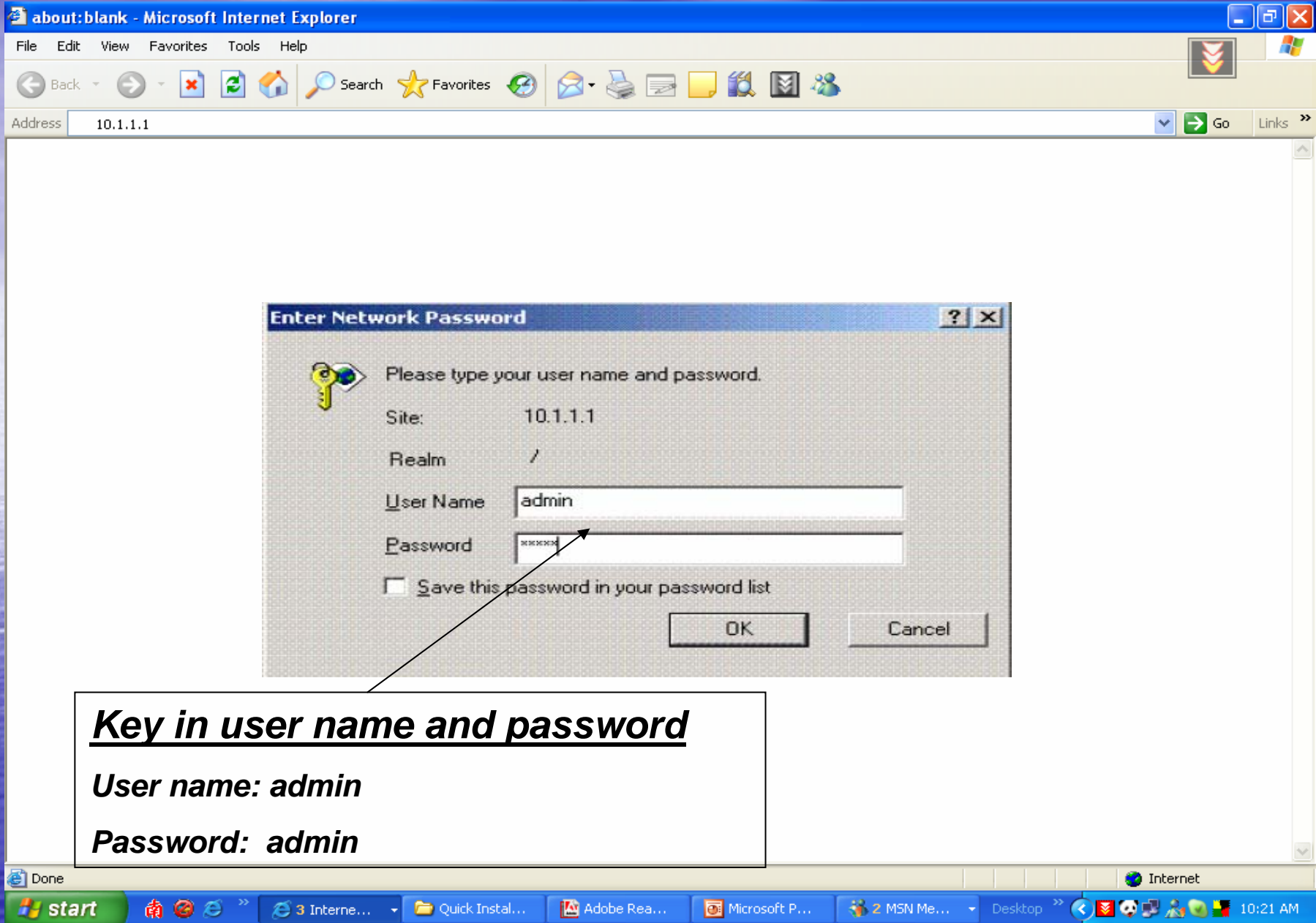


D-Link 500G Installation

*Prepare by
Broadband Multimedia Sdn Bhd*



Key in the IP:10.1.1.1 press enter login to the router modem



Key in user name and password

User name: admin

Password: admin

GS8100 Configuration Manager GUI - Microsoft Internet Explorer

Address: http://192.168.1.1

D-Link
Building Networks For People

System View

Use this page to get the summary on the existing configuration of your device.

Device		DSL			
Name:	Titanium	Operational Status: Startup Handshake			
H/W Version:	810012	Last State: 0x0			
S/W Version:	1.37R1.00.B3(020524 g/T99.9.13)	Standard: Multimode			
Serial Number:		Up		Down	
Mode:	Routing And Bridging	Speed	Latency	Speed	Latency
Up Time:	0:0:12	0 Kbps	-	0 Kbps	-
Time:	Thu Jan 01 00:08:12 1970				
Time Zone:	GMT				
DST:	OFF				
Host Name:	-				
Domain Name:	-				

WAN Interfaces							
Interface	Encapsulation	IP Address	Mask	Gateway	Lower Interface	WPI/VCI	Status
ppp-0	PPPoE	0.0.0.0	0.0.0.0	0.0.0.0	adsl-0	0/25	

Lan Interface							
Interface	Mac Address	IP Address	Mask	Lower Interface	Speed	Duplex	Status
eth-0	00:05:40:01:01:00	192.168.1.1	255.255.255.0	-	Auto	Auto	
usb-0	-	192.168.1.2	255.255.255.0	-	-	-	

Services Summary							
Interface	NAT	IP Filter	RIP	DHCP Relay	DHCP Client	DHCP Server	IGMP
eth-0	✓ inside	✗	✗	✗	✗	✓	✗
ppp-0	✓ outside	✗	✗	✗	✗	✗	✗
usb-0	✓ inside	✗	✗	✗	✗	✓	✗

Modify Refresh Help

Click WAN and QUICK CONFIGURATION to setting

- D-Link
- Home
 - Home
 - Quick Configuration
- LAN
- WAN
- Bridging
- Routing
- Services
- Admin

Quick Configuration

Use this page to quickly configure the system.

1. Choose PPPOE LCC

VPI:	0
Operation Mode:	Yes
Connection Type:	PPPoE LLC
VPI:	0
VCI:	35
Bridge:	Disabled
IGMP:	Disabled
IP Address:	0 0 0 0
Subnet Mask:	0 0 0 0
DNS	
Primary DNS Server:	0 0 0 0
Secondary DNS Server:	0 0 0 0
PPP	
Username:	guest
Password:	*****
Use DNS:	<input type="checkbox"/> Enable <input type="checkbox"/> Disable

2. Key in the DNS Number

202.188.0.133

202.188.1.5

3. Key in Streamyx use name and password

xxx@streamyx

XXXXXXXX

Copyright © 2002 D-Link, Inc. All rights reserved.

Commit & Reboot

Use this page to commit changes to system memory and reboot your system with different configurations.

Reboot Mode:

Commit

Reboot

Refresh

Help

Copyright © 2002 D-Link, Inc. All rights reserved.

1. Click Commit

2. Click Reboot

D-Link

Home

Home

Quick Configuration

LAN

WAN

Bridging

Routing

Services

Admin

User Config

Commit & Reboot

Image Upgrade

Alarm

Diagnostics

Port Settings

GS8100 Configuration Manager GUI - Microsoft Internet Explorer

Address: http://192.168.1.1

D-Link

Building Networks For People

System View

Use this page to get the summary on the existing configuration of your device.

Device		DSL			
Name:	Titanium	Operational Status:		Linkup	
H/W Version:	810012	Last Status:		0x0	
S/W Version:	1.07R1.00.B3(020524g/793.3.13)	Standard:		Multimode	
Serial Number:		Up		Down	
Mode:	Routing And Bridging	Speed	Latency	Speed	Latency
Up Time:	0:0:12	0 Kbps	-	0 Kbps	-
Time:	Thu Jan 01 00:00:12 1970				
Time Zone:	GMT				
DST:	OFF				
Host Name:	-				
Domain Name:	-				

WAN Interfaces							
Interface	Encapsulation	IP Address	Mask	Gateway	Lower Interface	VPI/VCI	Status
ppp-0	PPPoE	10.0.0.2	255.255.255.0	10.0.0.3	aal5-0	0/35	Linkup

Lan Interface							
Interface	Mac Address	IP Address	Mask	Lower Interface	Speed	Duplex	Status
eth-0	00:05:40:01:01:00	192.168.1.1	255.255.255.0	-	Auto	Auto	Linkup
usb-0	-	192.168.1.2	255.255.255.0	-	-	-	Linkdown

Services Summary							
Interface	NAT	IP Filter	RIP	DHCP Relay	DHCP Client	DHCP Server	IGMP
eth-0	✓ inside	✗	✗	✗	✗	✓	✗
ppp-0	✓ outside	✗	✗	✗	✗	✗	✗
usb-0	✓ inside	✗	✗	✗	✗	✓	✗

Modify Refresh Help

1. This two light must be green color

2. When u get the IP on 3 column is mean Successful Connected

Please contact

1-300-88-9515

activate your account now